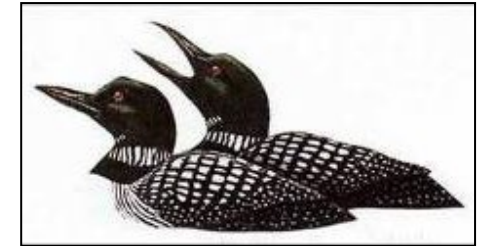


LOON WATCHERS WANTED



Interested in helping with our annual mid-May and mid-July loon surveys or any of the other work we do? Contact any of the Montana Common Loon Working Group's Area Coordinators listed below. Use the map to locate your area of interest.

Libby Area: *Ed Morgan*

Libby Ranger District, Kootenai National Forest
(406) 293-7773 edward.morgan@usda.gov

Troy Area: *Sean Hill*

Three Rivers Ranger District, Kootenai National Forest
(406) 295-7463 sean.hill@usda.gov

Kasanka Area: *Jessica Swanson*

Eureka Ranger Station, Kootenai National Forest
jessica.swanson@usda.gov

Kalispell West Area: *Chris Hammond*

Montana Fish, Wildlife and Parks, Region 1
(406) 751-4582, hammond@mt.gov

Tally-Stillwater Area: *Laura Strong*

Tally Lake Ranger District, Flathead National Forest
(406) 758-3501 laura.strong@usda.gov

Flathead River Forks Area: *Cas Waters*

Hungry Horse Ranger District, Flathead National Forest
(406) 387-3804 cas.waters@usda.gov

Swan Valley Area: *Mark Ruby*

Swan Lake Ranger District, Flathead National Forest
(406) 837-7531 mark.ruby@usda.gov

Clearwater Area: *Torrey Ritter*

Montana, Fish, Wildlife and Parks, Region 2

(406) 542-5551 torrey.ritter@mt.gov

Flathead Indian Reservation: *Whisper Camel-Means*

Confederated Salish and Kootenai Tribes
(406) 673-2700 ext. 7224 or (406) 370-6050 whisper.means@cskt.org

DNRC NW Land Office: *Chris Forristal*

Department of Natural Resources and Conservation
(406) 751-2259 cforristal@mt.gov

Glacier National Park: *Jami Belt*

Glacier National Park
(406) 888-7863 glac_citizen_science@nps.gov

Lower Clark Fork: *Nate Hall*

Avista Corporation
(406) 847-1281 Nate.hall@avistacorp.com

East Front: *Wendy Clark*

Choteau Ranger Station, Lewis and Clark National Forest
(406) 466-5341 wendy.e.clark@usda.gov

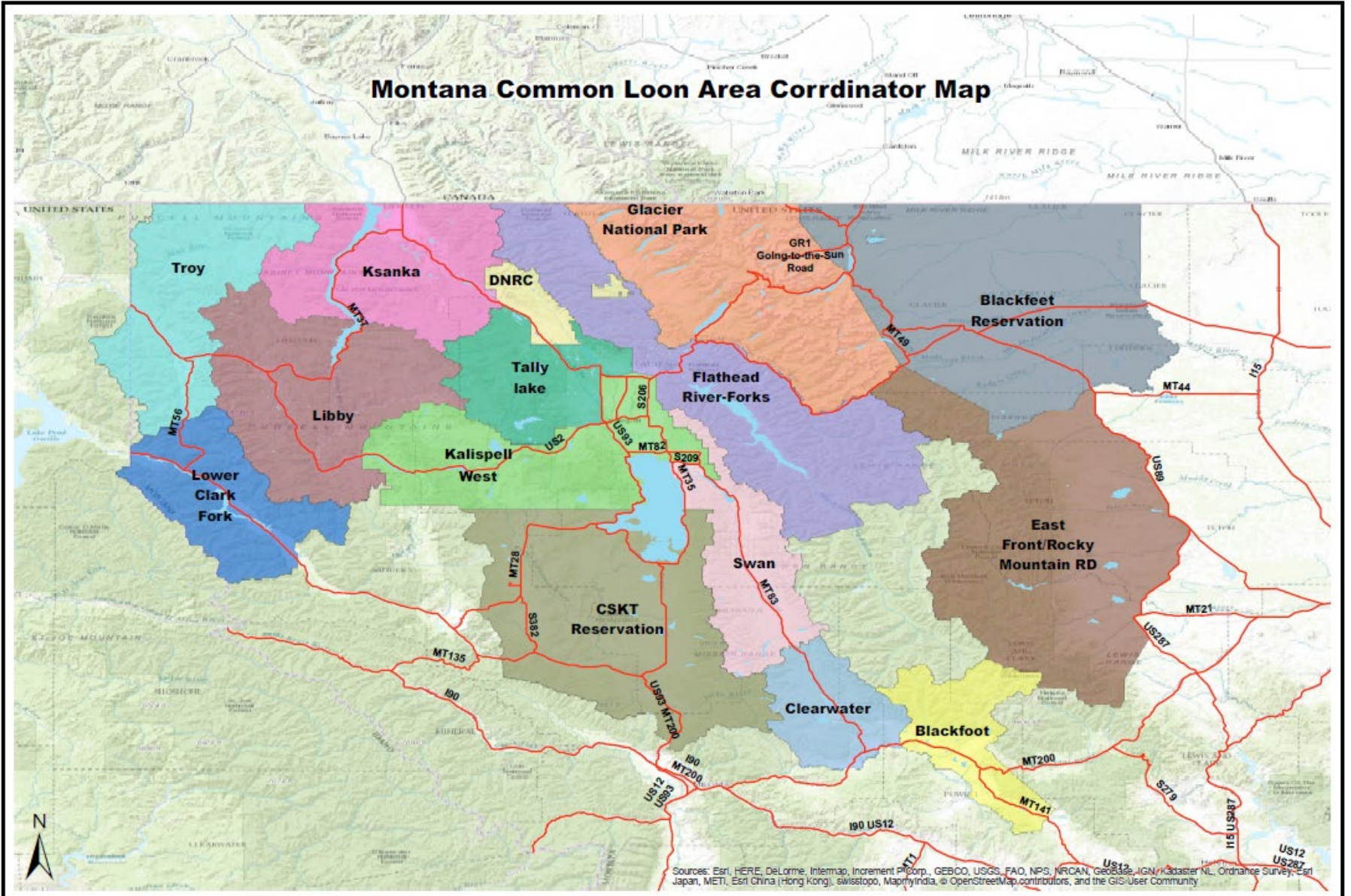
Blackfoot Indian Reservation: *Jami Belt, acting*

(406) 888-7863 glac_citizen_science@nps.gov

Blackfoot River Area Lakes: *Elaine Caton*

(406) 793-5038 woodpecker@blackfoot.net

Montana Common Loon Area Corrdinator Map



Sources: Esri, HERE, DeLorme, Intermap, InCREMENT P, Corp., GEBCO, USGS, FAO, NPS, NRCAN, GEBCO, IGN, Kadaster NL, Ordnance Survey, Esri Japan, METI, Esri China (Hong Kong), swisstopo, Mapbox India, © OpenStreetMap contributors, and the GIS User Community